

# INSTRUCTIONS PRE-PRESS

## INFORMATION FOR THE CORRECT CREATION OF A PRINT FILE FOR THE ADVERTISING PAGE OF THE MAGAZINES

### Stile Italia Edizioni Periodici

The following indications are intended to indicate the right execution for producing pdf with the optimal characteristics for printing.

FOLLOWING THE SPECIFICATIONS OF THE STANDARD ISO 15930-6, WE RECOMMEND TO PROVIDE US WITH PDFX1A-2003.

We invite you to respect the usual quality standards, such as the image resolution which must be 300 dpi, abundances, CMYK color selections (not Pantone® or RGB for a print in four colors), embedded fonts or drawn - vector.

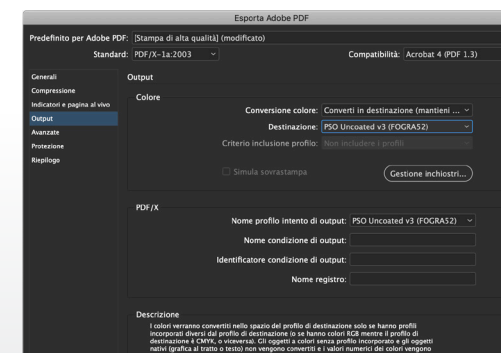
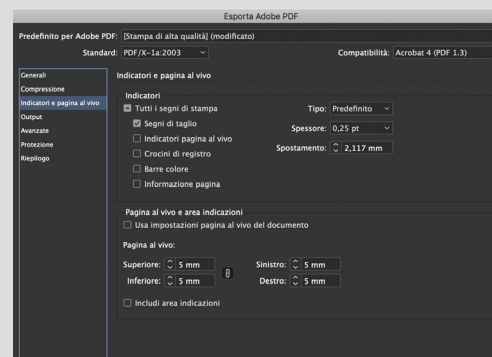
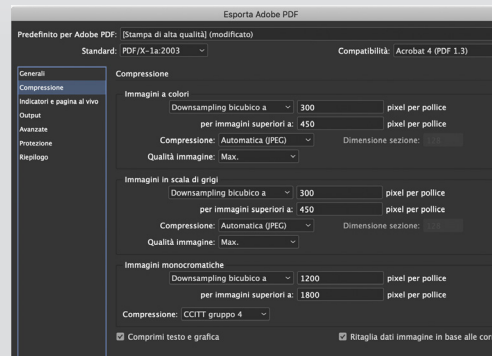
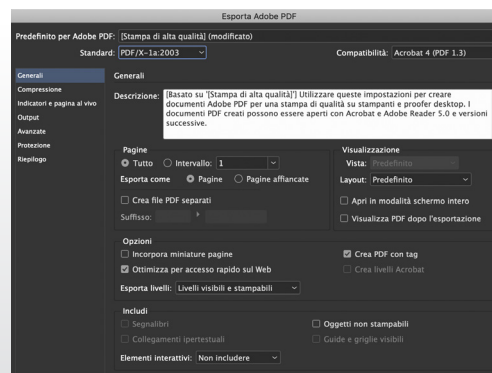
## FULL BLEED FORMAT MAGAZINED PAGES FOR CREATION WITH GRAPHIC APPLICATION

The created document must absolutely comply with the bleed measurements listed here + 5 mm of side bleed (see example on last page)



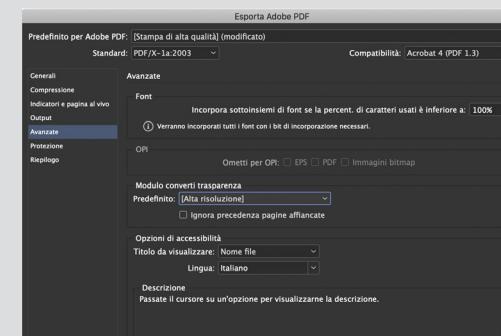
## EXPORT IN PDF FORMAT

PDF export or PDF save from your graphics application: after having chosen export or PDF saving of the graphic page, follow the settings indicated below. (Example shown below using the Adobe InDesign application)

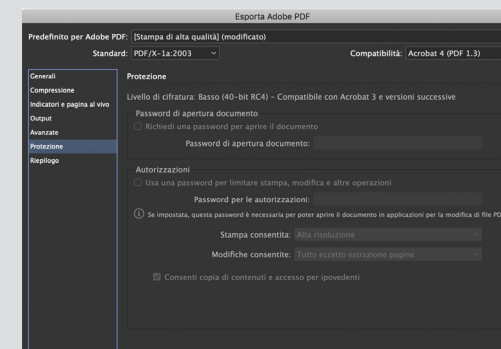


Use the PSOUncoated\_v3\_FOGRA52 profile as destination, in this way RGB objects will be converted, and never forget to click on the Ink Manager button and select the option to convert all spot colors to process colors (Recommended profile for Cover pages).

Use the PSO\_LWC\_IMPROVED FOGRA 45 as the destination for files destined for the magazine.



The transparency conversion preset «High resolution» allows excellent results.



## FORMAT PAGE DONNAMODERNA

200x280 mm + 5 mm per side (PAGE)

400x280 mm + 5 mm per side (DOUBLE PAGE)

100x280 mm + 5 mm per side (1/2 VERTICAL PAGE)

200x140 mm + 5 mm per side (1/2 HORIZONTAL PAGE)

# INSTRUCTIONS PRE-PRESS

INFORMATION FOR THE CORRECT  
CREATION OF A PRINT FILE WITH MARKS  
AND TRIM FOR MAGAZINES

**Stile Italia Edizioni**  
**Periodici**

Imposta documento

Intento: Stampa

Numero di pagine: 1 ☐ Pagine affiancate

Numero pagina iniziale: 1 ☐ Cornice di testo principale

Dimensioni pagina: [Personale]

Larghezza: 200 mm Orientamento: ☒ ☐

Altezza: 280 mm

Margini

Superiore: 10 mm Sinistra: 10 mm

Inferiore: 10 mm Destra: 10 mm

▼ Pagina al vivo e area indicazioni

	In alto	In basso	A sinistra	A destra
Pagina al vivo:	5 mm	5 mm	5 mm	5 mm
Area indicazioni:	10 mm	10 mm	10 mm	10 mm

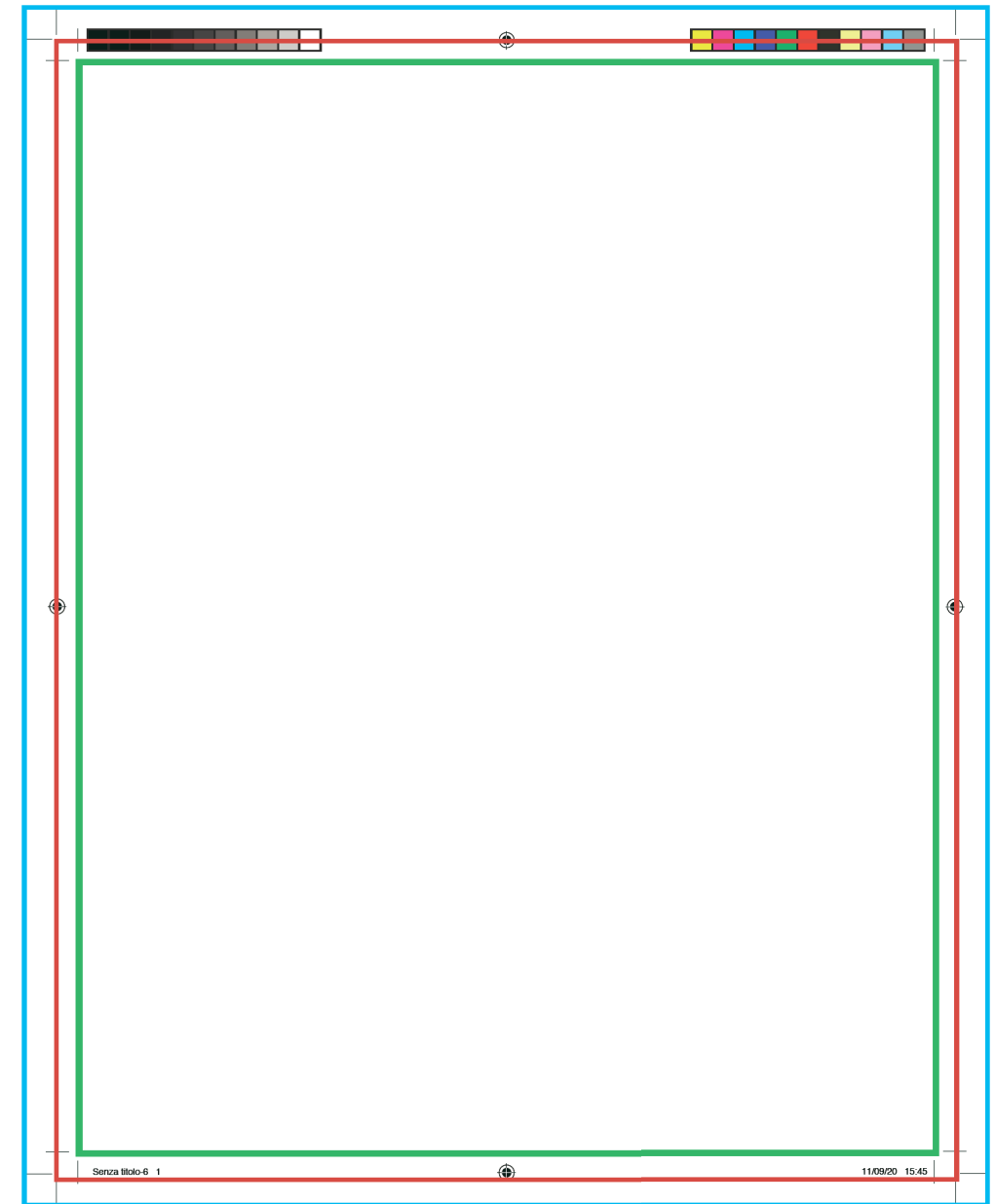
☒ Adatta elementi pagina alle modifiche del documento

☒ Anteprima

**MEDIA BOX:** defines the total size of the medium on which it will be printed and contains all the other boxes;

**BLEED BOX:** defines the limits in which the page content is cut in production, but still includes the so-called "trim";

**TRIM BOX:** defines the final size of the page after the final cut; it is typically defined by crop marks; it is used by editing software (imposition).



Page trimmed 200x280mm

Page + 5mm per side (210x290mm)

Total file page + 10mm per side (220x300mm)

**TRIM BOX**

**BLEED BOX**

**MEDIA BOX**